

# On the Move

*'ENLARGE THE PLACE OF YOUR TENT, STRETCH YOUR TENT*

*CURTAINS WIDE, DO NOT HOLD BACK;*

*LENGTHEN YOUR CORDS, STRENGTHEN YOUR STAKES.*

*FOR YOU WILL SPREAD OUT TO THE RIGHT AND TO THE LEFT...!*

*(ISAIAH 54:2-3)*

CMF's prime focus is to equip and encourage Christian doctors to fulfil Jesus' dual commission 'to preach the kingdom of God and to heal the sick' (Luke 9:2). Our activities to this end include Fellowship, Evangelism, Ethics, Student Support, Mission and Literature. In this issue of *CMF News* we want to remind you of what we are doing already and present our vision for the future.

God has richly blessed CMF over recent years and due to a combination of increased efficiency, judicious savings in the office, more reclaimed tax under the new Gift Aid Regulations and generous giving from members our nine month surplus by October 2001 was £54,000, despite an increase in our overall activity and expenditure. We believe that our healthy financial situation, combined with increasing demands for our services, both from within and outside the fellowship, is an encouragement for us to be doing more; and that means more staff and more involvement of volunteers at all levels. When Jesus told his disciples to look at the harvest he didn't command them all to work harder to bring it in, but rather to ask the Lord of the harvest to raise up more workers. Specifically we are looking to employ:

- A full-time Assistant General Secretary
- A part-time Student Secretary
- More Regional Staffworkers
- A new database assistant

The Student Secretary and database assistant are already accounted for in our 2002 budget, and staffworkers are funded by the regions themselves, so we believe we can achieve all the above simply by raising the extra support needed for an Assistant General Secretary. These appointments will move us a long way forward in achieving the plans outlined on pages 6 and 7. Could any of them be you or someone you know?

If you share the vision, and would like to see it all happen, then please join us in praying and giving towards it.

**Peter Saunders**

*CMF General Secretary*

## New Staff Needed

### Assistant General Secretary

We are looking to develop CMF's ministry by appointing a full-time medically qualified Assistant General Secretary to work alongside Peter Saunders and share his current duties, covering the full range of CMF's activities. Post-graduate medical qualification required, along with significant experience in Christian ministry and administration, and a commitment to CMF's key ministries of evangelism, ethics, medical mission, publishing and pastoral support of Christian doctors and medical students. The post would to a large extent be shaped around the experience, gifts and abilities of the applicant. Salary based on clinical

lecturer scales. Please contact Peter Saunders if you would like to explore this exciting London-based opportunity. Job description and person specification are available on request.

### Student Secretary

Discussions are progressing with someone to take on significant responsibility for some parts of Peter Saunders' previous Student Secretary role on a part-time, but long-term basis. Please pray for those involved as they seek to clarify the right way forward in this fundamental part of CMF's ministry.

### Regional Staff – workers

We are constantly on the look out for individuals able to take some time out from their medical commitments to work amongst students and junior doctors at a local and regional level on a part or full-time basis. There are immediate needs in London, East UK, and Scotland, and further opportunities may well arise throughout the UK in the summer of 2002. We would love to have seven Regional Staffworkers in all. Currently Ruth Selwood works in the West Midlands and South West, Malcolm Savage is working in the north of England, and Tim Lewis covers Ireland. If you are interested now or in the future, please contact Peter Saunders in the London office.

### Database administrator

We wish to expand the London office by appointing someone to take full responsibility for the maintenance of the membership database, including all new members, changes, graduations, pastoral care, returned mail etc., along with a share in the regular, general administrative duties of a busy office.

If you know of someone, with some computing skills, looking for such a full-time post, please contact John Alford in the London office for further details.

## Staff News

### Our new Overseas Support Secretary

Peter Armon joined the CMF staff on 1 December:



*Peter, tell us something about your early background*

I was born and brought up in London's East End and converted under the ministry of Billy Graham. I was a medical student at Charing Cross Hospital, qualifying in 1965 and marrying Carol the previous year.

*Have you any children?*

Yes, we have three sons, all married, and three grandchildren.

*Where have you worked in the past?*

After junior hospital posts in England I worked as a district medical officer in Malawi for three years, responsible for developing maternity services. After training in obstetrics and gynaecology in the UK I worked as a consultant at Kilimanjaro Christian Medical Centre, Tanzania. We returned to the UK in 1978 when I was appointed consultant in O & G in South Cumbria. I left this post to take up missionary work in Spain and North Africa in 1990.

*How did that come about?*

Through the contact of family members and young people in *World Horizons*, which we joined full time and so moved to Spain. We helped to set up a prayer, training and outreach base there.

*Didn't you also work in Gibraltar?*

Yes, as an obstetrician and by setting up a *World Horizons* team in Gibraltar. This was in order to support missionaries working in North Africa and to encourage, envision and educate local churches about mission.

*Have you experienced any major turning points in your life?*

1972 was one, when we were called to mission in Tanzania. We knew we should go and get alongside those doing mission, to care for them. Another major call was in 1990, giving up full time medicine to go to Spain. And a year ago I had a heart attack which made me reconsider my life and led into this job with CMF.

*How do you see the job at CMF developing?*

I'm not sure yet, there's lots to learn. Getting alongside missionaries in a supportive role

is certainly important. That may no longer be by going overseas, but I still hope to be there for people working overseas and develop personal links where possible.

*Are you happy to be back in the UK?*

Carol and I are surprised at the culture shock we are experiencing! Of course, as well as the changes in life and medicine in the UK we have both changed too.

*Is there anything we can pray for on your behalf?*

Thank you. Well, that we settle into the UK effectively and that I learn quickly in this new post. Also for many dear friends left behind.

## Thanks for everything David

David Clegg retired at the end of December. David has served as CMF Overseas Support Secretary and MMA HealthServe General Secretary since 1995, and in this role oversaw the relaunch of MMA HealthServe as a new organisation promoting healthcare mission, with its own premises, publications, website and magazine. David brought to the job not only extensive medical missionary experience as an obstetrician/gynaecologist in Southern Africa, but also a passionate concern for the welfare and support of medical missionaries and for the world's poor. During his time as CMF Overseas Support Secretary our ministry in supporting and equipping missionary members and elective students grew appreciably. Thanks so much David for all you have done and for all those you have encouraged in taking Christ's commission 'to preach and to heal' to the ends of the earth.

## New Publications Assistant



Jacky Engel has just started a part-time role as Publications/Ethics Assistant in the London office for six months. She will be helping in the areas of literature research, writing, sub-editing, desk-top publishing, and web authoring. Jacky completed a degree in Medical Sciences at Birmingham University in 1998, and after two years research at the Department of Paediatrics and Child Health at Birmingham University, she is now doing an MA in Medical Ethics and Law at Kings College London. Welcome to the team Jacky!

## Members' News

### Congratulations

*On their postgraduate qualifications*  
MRCP James Myerson

*On their awards and appointments*  
If you have recently received an award, a new appointment or postgraduate qualification please let us know for the next edition of *CMF News*.

### Obituaries

We report the deaths of the following members and offer sympathy to their families:

**Guy Constable** (*q* Dublin 1948; *d* 8 November 2001) joined CMC Ludhiana in the department of anatomy in 1954, later serving as principal of the medical college from 1962-71. He is remembered by former staff and students as an excellent teacher, whose care for the students was well known. In 1972 he was appointed to the council of the Friends of Ludhiana, and was its chairman from 1991-97.

**William McAllister** (*q* Edinburgh 1939; *d* 22 November 2001) was a medical missionary in both India and Northern Rhodesia before returning to the UK to become Governor of Men's Social Services and Colonel in the Salvation Army. After retirement he continued working in a Christian medical practice as doctor and counsellor, and throughout his life combined the roles of doctor and minister.

**Albert West** (*q* Birmingham 1958; *d* October 2001) was a Consultant Psychiatrist at St Andrew's Hospital in Northampton.

### Movements

#### Outgoing

Nicola Bailhache (Bristol) to Ecuador  
Alice Flewett (Royal Free) to Niger Republic  
Tim Henderson (Leicester) to Australia  
Andrew Perkins (Royal Free) to Mali  
Ron and Molly Pont (Hampshire) to Pakistan  
Nikki Rodwell (Birmingham) to France  
Alison Talbert (The London Hospital) to Tanzania  
Andrew Wearn (Birmingham) to New Zealand  
Jonathan Wraight (Edinburgh) to New Zealand

#### Homecoming

Aleksandra Bojarska (Poland) from USA  
Simon Collins (Liverpool) from Angola  
Ewen Harley (Edinburgh) from Samoa  
Kathryn Hogg (Edinburgh) from Nepal  
Susan Pickard (St Mary's) from Singapore  
Kevin Smith (Birmingham) from Benin  
Craig Stangroom (Nottingham) from Nepal



### Change of Address Abroad

Claudia Stein (Germany) from Switzerland to France

### CMF Internet Discussion Forum

The CMF internet discussion forum is now up and running at *Doctors.net*. If you are already a member of doctors.net then you will find us on the 'forums' page. Fill in a simple on-line form and you will gain access as soon as we have confirmed you are a CMF member. If you are not part of doctors.net already then go to [www.doctors.net.uk](http://www.doctors.net.uk) and join by filling in an on-line form. You will need your GMC number. The formation of a closed forum for CMF members initially sparked a protest from non-Christians; but led very quickly to an open forum on 'Religion' where Christians and non-Christians alike are debating a wide range of issues. Please join us. It is an amazing opportunity for on-line evangelism and apologetics as well as being a lot of fun.

### Looking for a GP post or locum?

See the insert for more details of specific posts wanted or offered. The CMF GP Bureau has lists of principals looking for partners who are members of CMF, of doctors seeking partnerships, and of trainers seeking trainees. Please send full details of what you have to offer/what you are looking for. Please mark all correspondence 'Personal' and send to: Dr Greg Folwell (Personal), Ian Gow Memorial Health Centre, Milfoil Drive, Langney, Eastbourne, East Sussex BN23 8BR. Please send SAE for a questionnaire to help match applications with vacancies.

### Membership Update

The office has been hard at work over the last six months carrying out a review of our membership procedures, catching up with several years' generosity, and chasing up all those who have overlooked their subscriptions for more than a little while!

**We now operate the following procedures:**

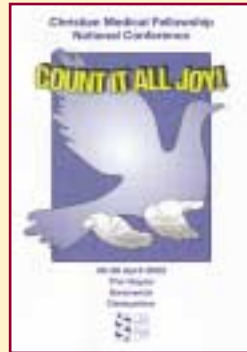
**Graduates:** we write three subscription reminder letters spread over 18 months (the last letter sent to up to three addresses) before removing someone from membership. Meanwhile they continue to enjoy all the benefits of membership.

**Students:** we write two letters over two years before removing someone from membership. Meanwhile they continue to enjoy all the benefits of membership.

We are also following up those from whom we have had mail returned, or whose Bankers orders have failed. Sadly this means that we have removed approximately 160 students and 380 graduates, so we now have only 850 student members, and 4,700 graduates. Why not recruit a colleague, friend, or ex-member(!) in 2002, and help us get back to 1,000 students, and 5,000 graduates? Now there is a challenge!

## Upcoming Conferences

### CMF National Conference 26-28 April 2002



You will have received a brochure for this, the main graduate event of the CMF year, with this edition of *Triple Helix*. We look forward to seeing you there. Please book soon.

### Juniors' Day Conference 16 March 2002

Plans are already being made for the Junior Doctors' Day conference in Birmingham this year - Saturday 16 March. Publicity will be out in mid-January. We'd also like to encourage lots of juniors to go to the National CMF Conference at Swanwick in April. Do put the dates in your diary and look out for more details.

### Overseas Update Course

This excellent course for all intending to work abroad, or for those abroad wanting to be brought up to date with the latest developments from leaders in the field, will be held at Oak Hill College on 24 June - 5 July 2002. Dates for 2003 are 7 July - 18. More information is available from Peter Armon at the CMF Office.

### Media Training Days

Following the great success of our five media training days in 2001 we are planning to run more in the summer/autumn of 2002. Watch this space for dates and venues.

### Confident Christianity

The last Confident Christianity Evangelism Training Tour finished in Spring 2000, but we are planning another for the autumn/spring of 2002/2003.

### Luis Palau Outreach - May 2002

The Lawyers' Christian Fellowship, as part of their 150th anniversary year, have asked Luis Palau to share his testimony and the gospel at a series of lunches and dinners around the UK in the week of 13-18 May 2002. CMF has been invited to participate in meetings in Southampton, Bristol, Birmingham, Northampton, Nottingham, London, Liverpool and Manchester by providing table chairpersons (responsible to fill a table with 10 guests), follow-up and sponsors. More information is available

from LCF, 33 St James Square, Bath BA1 2TT. Tel 01225 789166.  
Email [director@lawcf.org](mailto:director@lawcf.org).

### Nurses' and midwives' conferences

UCCF's Christian Student Nurses' and Midwives' annual conference takes place from 15-17 February 2002 in Ledbury, Herefordshire.

For details email [csnm@uccf.org.uk](mailto:csnm@uccf.org.uk) or telephone 0116 255 1700.

Christian Nurses and Midwives are planning a weekend away (8-10 March 2002) to explore the theme 'Christian ethics in practice'. The venue is Feldon Lodge, Hemel Hempstead, Herts. Further details from CNM, 38 West Avenue Road, London E17 9SE. Tel 07941 800637.  
Email [info@cnm.org.uk](mailto:info@cnm.org.uk)

Their recent day conference entitled 'The Jesus model of nursing' looked at Jesus as a model of humanity, and caring in a Christ-centred way. Complimentary copies of *CNM News* are available on request from CNM.

### Communications Training

The Communications Training Programme 2002 has details of courses on various communication skills, such as giving interviews for radio or television, desktop publishing and giving a PowerPoint presentation. The courses come at three levels: introductory, advanced and masterclass. 'Crisis management', for example, is an advanced course to help you be properly organised if things go wrong and the media take an interest. The courses are offered by the Church of England's Communications Unit and the Catholic Communications Centre. Details are on their website.

[www.commstraining.cofe.anglican.org](http://www.commstraining.cofe.anglican.org) or telephone 020 7898 1458/65.

### Inside/Outside Doctors' Dilemmas 2002 29 April to 3 May

Burrswood Doctors' Dilemmas courses always seek to provide real clarity and refreshment to busy doctors. This course will equip doctors to cope with the stresses of the constant need for difficult decision-making and will also look at issues relating to the working relationship between doctors, their practices and PCTs, all within the peace and beauty of Burrswood. Expert speakers to be announced.

For a booking form please contact Veronica Ross, Burrswood, Groombridge, Tunbridge Wells, TN3 9PY. Tel 01892 863637.

## Conferences Reports

### CMF Autumn 2001 Conferences

The autumn conference season is now over, and has been a great success with over 500 CMF members in total attending weekend or day conferences for fellowship, encouragement and teaching. Expect to see write-ups of some of the talks in *Triple Helix* over the coming months. Conferences included Northern Irish (5-7 October), Northern (19-21 October), South-East (9-11 November), Scottish (16-18 November), Midlands (3 November), Oxford (10 November) and Cardiff (17 November). Planning is already underway for next year.

### Saturday Night and Sunday Morning - Wednesday 28 November 2001

This CBPP conference on the morning-after-pill provided a stimulating array of speakers on both sides of the debate, including the MP responsible for introducing it over-the-counter without prescription. One of the highlights was a fascinating debate between Graham Barker from Schering Health Care Limited and Philip Howard over the mechanism of action of the 'contraceptive'.

### Healthcare Mission Forum - Tuesday 27 November 2001

Over 100 leaders in healthcare mission attended this inaugural conference on the challenges in healthcare mission organised jointly by CMF, MMA HealthServe and Global Connections (formerly EMA). In their opening addresses both Peter Saunders (CMF General Secretary) and Lena Morrow (Belfast Bible College), without any prior collusion and speaking from different passages of Scripture, made the same three points - that healthcare mission was about Preaching the Gospel, Healing the Sick and Bringing justice to the poor. Did God want to **underline** this? A series of seminars and small group discussion addressed specific issues in healthcare mission today. Transcripts of talks and seminars will be published. Watch this space.

## Students

### Regional Staffworker News

CMF has three regional staffworkers: Ruth Selwood (West UK), Tim Lewis (Ireland) and Malcolm Savage (Northern England). All our staffworkers produce regular prayer letters so if you would like to support any one of them in prayer please let us know. We are still looking for staffworkers for London, East England and Scotland, so if you think God may be nudging you please contact Peter Saunders for more details.

### Malcolm Savage reports on his first months in the job

Since August 2001 I have been working full time as CMF's Northern staffworker. This job involves supporting the medical students and junior doctors in Newcastle, Durham, Liverpool, Manchester, Leeds and Sheffield. No one had done this job here before so a lot of my time has been spent meeting the groups and getting a feel for the Northern scene. I have been really encouraged by the vision and dedication of all the student leaders I have met. In the face of logistical difficulties and student apathy it can be hard to run a group, but they all work at it faithfully. They have also been encouraged just to know that I am around.

I have spoken at one house-party and at several meetings on a mixture of ethics and general Christian topics. These have taught me lots and been well received by the students. I am helping to organise a Northern *Confident Christianity* course and there is the possibility of a summer team to the former USSR in 2002. A couple of groups are very outward looking and I am hoping to get involved in evangelism. I am also tasked with supporting junior doctors in this region.

### Electives Advice

The 2002 CMF Electives Preparation Days will be on 9 February (Edinburgh), 9 March (Leeds) and 20 March (London); publicity out soon. The following two resources are available FREE to members on request:

*Planning your Medical Elective Overseas*  
- all you need to know

*Medical Elective Opportunities*  
- with over 30 mission societies

*Planning your Elective* is also available on the Internet at [www.cmf.org.uk/mission/prepelec.htm](http://www.cmf.org.uk/mission/prepelec.htm)

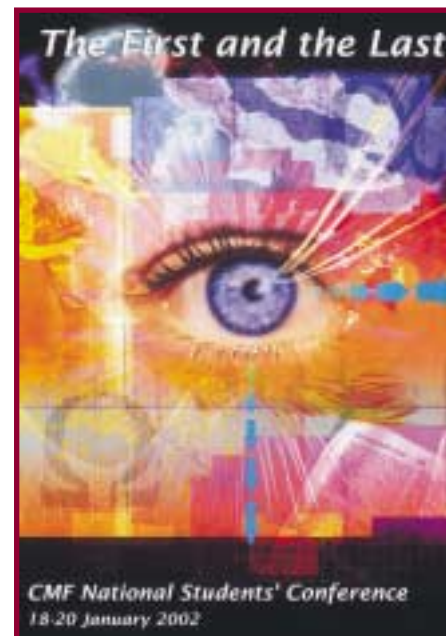
If you would like specific advice on the where, why and how of your elective, or would like to be put in touch with other students who may have been to the same hospital (or country), contact Peter Armon (CMF Overseas Support Secretary) at the CMF Office. Email [peter.armon@cmf.org.uk](mailto:peter.armon@cmf.org.uk).

### Elective Grants

The Edinburgh Medical Missionary Society provides grants to students studying at Scottish or Northern Irish universities for their overseas electives. For more details contact EMMS, 7 Washington Lane, Edinburgh EH11 2HA. Telephone 0131 313 3828. Email [info@emms.org](mailto:info@emms.org). MMA HealthServe provides the same service for students studying in English or Welsh universities. Contact MMA HealthServe, First Floor, 106-110 Watney Street, London E1 2QE. Tel 020 7790 1336. Email [info@mmahealthserve.org.uk](mailto:info@mmahealthserve.org.uk).

### The First and The Last

By the time *CMF News* went to press bookings were rolling in for the CMF National Students' Conference at Swanwick on the weekend of 18-20 January 2002. Well



over 300 students are expected including over 40 from 20 countries abroad. A report will appear in the next edition of *CMF News*. Much more information about the conference and on individual seminar topics is available on the CMF Students' website at [www.cmf.org.uk/students/natconf.htm](http://www.cmf.org.uk/students/natconf.htm).

### Summer Teams 2002

Plans for CMF Summer Evangelism teams to the former USSR, Eastern Europe and the Balkans are underway. At least six teams are expected to go with some new and some old locations. If you are interested in getting involved, read more about it, including some inspiring reports in the January *Triple Helix* and *Nucleus*. Details available soon.



## International Christian Medical and Dental Association

### South America

Nine South American countries were represented at ICMDA's first South American Regional Conference held at Punta del Este, Uruguay, 12-14 October 2001. An extremely well-organised conference attracted almost 250 participants. The theme was on family life and each morning began with Bible readings by Dr Rene Padilla with some hard-hitting words on still-prevalent male attitudes.

The conference was such a success that before it finished the South Americans were already talking about a further conference in Ecuador in 2 years' time.

During the conference a regional committee was convened - a further important step in ICMDA's policy of regional devolution.



Dr Jorge Patpatian (left) and members of the organising committee

### India

India has two associations for Christian doctors, both of which are members of ICMDA.

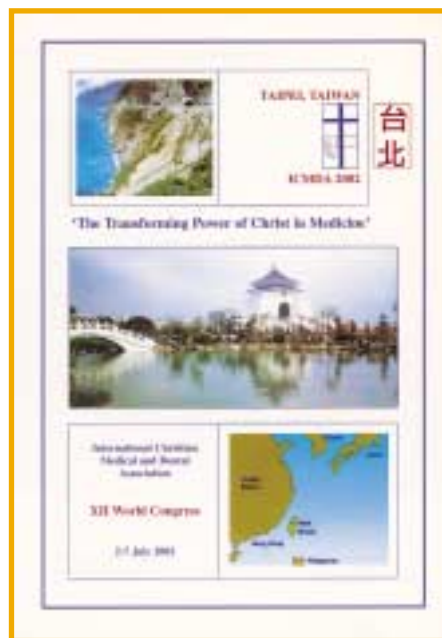
The Christian Medical Association of India (CMAI) grew out of the Medical Missionary Association of India in the 1920's. In November they held a large inter-disciplinary conference in Delhi to celebrate their 75th anniversary.

Two weeks earlier the Evangelical Medical Fellowship of India (EMFI) held their

conference also in Delhi. Peter Saunders was among the speakers at this conference. EMFI grew out of UESI student work some 25 years ago. There is some overlap and a good deal of co-operation between the two groups.

Christians in India today are being called to suffer for their faith, doctors and medical students among them. They deserve our prayers.

### Taiwan July 2002 - ICMDA's XII World Congress



Notice of this was circulated with the last *CMF News*. The Congress web-site may be visited via ICMDA's recently re-vamped web-site ([www.icmda.org](http://www.icmda.org)) or via CMF's web-site.

Even if you cannot come, do consider a gift to the bursary fund to enable a colleague or student from an emerging country to

participate in a potentially life-changing experience. Average grants to assist fares and fees are around £350. The bursary committee meets to make allocations on 16 February.

### ICMDA General Secretary

ICMDA is in the process of appointing a new General Secretary. The interview committee meets on 15 February in Cambridge.

In view of this and the Taiwan Bursary Committee the previous day, ICMDA is inviting friends to **set aside some time on Wednesday 13 February to pray** for God's blessing on the Association in all its activities and for wisdom in the decisions.

### Key Prayer Topics for ICMDA

- Strength and wisdom for the Taiwan organising committee for ICMDA's XII World Congress.
- Adequate provision and wise distribution of bursary grants for Taiwan World Congress.
- Clear guidance as to God's choice for ICMDA's next General Secretary.
- Wisdom over related decisions regarding the future location of ICMDA's office.
- Vision and initiative for regional committees in East Africa, Southern Africa and South America.
- Progress in ongoing regional devolution in other parts of the world.

### New Members of ICMDA

Five countries in five different continents are in the process of preparing applications for membership of ICMDA. These applications will be considered by ICMDA's committees when they meet in Taiwan in July 2002.

# Finance



For the first time in over 30 years, the accounts of the Fellowship reveal the true financial picture, since the CMF Trust Ltd and Fellowship accounts have now been combined. This means greater transparency, and greater accountability to the Fellowship - good news all round!

The nine months Fellowship accounts are also very encouraging, and we are thankful to the Lord for generous donors, and generous provision for our needs thus far in

2001. There is a surplus of £54,000 arising from an increase in subscriptions and donations, a significant increase in Gift Aid tax reclaimed, and very generous legacies (might CMF be a beneficiary in your will?). While income is well ahead of budget, expenditure has been very much in line with budget, hence the current surplus.

A preliminary balanced budget for 2002 has been drawn up, assuming the same level of

support for all our current activities. However, we cannot contemplate the appointment of further medically qualified staff, without increased financial support over the longer term. Might you be able to contribute more, so that CMF can do more for God's Kingdom in medicine?

**Giles Rawlinson**

*Chief Administrator*

## Fellowship

God's plan is to save a people not individuals - in order that those people may be with him *and* be sent out (Mk 3:14). Fellowship with other Christian doctors is vital in order that we can stir one another up to love and good works (Eph 4:12, Heb 10:24-25). If we are to be faithful to Christ in medicine as we face increasing need and growing pressure we first need each other. The fellowship functions of CMF are achieved primarily through our local groups, conferences and pastoral care programmes - and are highly 'volunteer dependent'.

Currently we:

- Co-ordinate a system of volunteers including regional and medical school secretaries, member reps, student reps, pastoral care supporters and committee members.
- Run about fifteen national and regional conferences annually for students and doctors.
- Support local graduate and student groups with resources, speakers, literature, mailing, publicity, and through student and graduate field staff.
- Provide a membership database and answer telephone, postal and email enquiries from members.
- Produce a handbook and run a website providing information about key resources, people and organisations useful to help members fulfil their own individual calling.
- Co-ordinate a centrally run pastoral care scheme for PRHOs and SHOs.
- Provide email discussion groups for CMF student reps and international Christian medical students in 40 countries abroad.

We are planning to:

- Develop more vocational training with PGCE approval on time and money management, career decisions, balance of work and family, practical ethical dilemmas, theology of work and practicalities of medical practice in the changing NHS.
- Extend the pastoral care scheme beyond junior doctors.
- Extend the membership to allow associate members from other health-related professions.
- Introduce more regionalisation (and devolution) of CMF activities with encouragement of regional groups to take more responsibility for regional initiatives.
- Introduce a more streamlined communication facility using email for graduate groups, regional secretaries and committee members along the lines already in place for student reps and committees.
- Create a 'cyber-community' with fuller information about people, projects and events on the CMF website, with appropriate discussion forums.
- Develop the general committee into a body which not only receives reports and votes in committee members but also plays a more active role in policy formation and injecting new ideas.

## Evangelism

Evangelism in today's multi-faith world is complex and involves real skill both to challenge the false beliefs that blind unbelievers and also to defend the Gospel as 'true and reasonable' (Acts 26:25). Specific training, often not well provided for in churches, is needed to share Christ sensitively and effectively with patients and colleagues, who may be from 'other faith' backgrounds, will probably never visit a church and may not hear the gospel at all unless they hear it from us. Apostolic evangelism involves sharing the gospel in words people understand, in an environment in which people feel comfortable and with the opportunity for discussion.

Currently we:

- Provide evangelism training at student (and graduate) level based on these principles through the *Confident Christianity (CC)* Programme on a triennial cycle (~60 day conferences since 1989).
- Provide specific training for students in witnessing to Muslims (~12 *Ishmael* Conferences since 1995) and other faith groups (3 *Answering other Faiths* Conferences since 1999).
- Provide CC evangelism training materials on paper and on website.
- Make speakers available for evangelism training and for dialogue supper parties/college breakfasts/university forums etc.
- Provide evangelistic tracts (*Greatest Person*), Books (*Cure for Life*) and study materials (*CfL* study guide).
- Encourage regional student and graduate groups to host their own evangelistic events.
- Run an email discussion group for students involved in Muslim witness throughout the UK and beyond.

We plan to:

- Involve graduate members more in evangelism and evangelism training.
- Continue the current three year cycle for CC and extend it to involve graduates as well as students.
- Encourage more development of the existing partnership in holding evangelistic training events with LCF, UCCF and other similarly motivated organisations as appropriate on a regional level.
- Encourage more events which fulfil the apostolic principles listed above (understandable language, safe environment, opportunity for discussion).
- Produce more evangelistic literature specifically aimed at doctors and medical students.
- Maintain a steady flow of articles on evangelism and apologetics in CMF periodicals to keep evangelism at the top of the CMF agenda.
- Maintain a list of members available to speak at evangelistic events.

- Encourage the appropriate and sensitive sharing of faith with patients perhaps by adapting the CMDA's *Saline Solution* programme in a way that would be culturally appropriate to the UK.

## Ethics

Cultural shift is leading us to a situation where the Judeo-Christian values on which traditional medical ethical codes have been based have been jettisoned - and humanistic ideas increasingly imposed. This provides a serious threat both to our more vulnerable patients (the handicapped, elderly, chronically ill, poor, children and unborn) and to our members who are experiencing pressure to conform to the world's mould. These threats are going to increase in the coming decade and we need to be meeting them head on. We should meet the new ethical challenges both corporately and individually by promoting compassionate care for vulnerable patients and strong advocacy for fair treatment of both patients and Christian doctors within existing administrative and political structures (BMA, GMC, NHS etc). Our approach should be both incarnational and prophetic. We need *both* to model Christian compassion *and* to proclaim Christian values.

Currently we:

- Co-ordinate a Medical Study Group which discusses ethical issues and makes submissions to government and other official bodies.
- Contribute to media debate on ethical issues.
- Provide speakers on ethical issues for our own conferences and regional groups and for other organisations.
- Publish an extensive archive on ethical issues on our website and in our literature.
- Produce study materials on ethical issues for students.
- Provide an internet forum for members to discuss ethical issues.
- Have an official CMF rep on the BMA Students' committee.

We plan:

- Wider publication of our existing material on ethics.
- Development of a list of CMF spokespersons on specific issues.
- Media training events for members who are in a position to speak out on particular issues.
- Supporting and encouraging more concerted proactive lobbying by members through existing professional bodies such as the BMA.
- Developing further our already existing partnership with Christian groups like CARE, CBPP and the Christian Institute.
- Expanding our statement of values with policy statements on specific issues.



## Student Support

Student Support has always been at the heart of CMF's priorities. Douglas Johnson, CMF's first General Secretary, said that if CMF's student ministry and literature are good then the fellowship will be strong. Today's medical students are tomorrow's doctors - and CMF's future depends on nurturing the students who will lead it through the 21st century. Maintaining an effective student ministry means providing student staffworkers, student conferences (esp national), student publications and an effective student support and communication network of local reps and doctors. Evangelism must be at the top of the agenda.

Currently we support students through:

- Three regional student staffworkers and a relay worker, in West UK, Northern England and Ireland.
- An annual national conference attracting 350+ students and smaller regional conferences in Ireland and Scotland.
- *Nucleus* magazine quarterly.
- Evangelism training through *Confident Christianity*, *Ishmael* and *Answering other Faiths* conferences.
- Maintaining a support and communication network by post and email of 50 regional student reps and 30 medical school secretaries.
- A Student Co-ordinating Committee and *Nucleus* Editorial Committee.
- Providing information and preparation for student electives through correspondence, literature and electives days.
- An on-line archive of literature on Christian medical issues targeted at students.
- Student representatives on the BMA Medical Students' Committee and ICMDA Executive.
- An annual student leaders' conference for medical student group leaders.
- Providing speakers and local support and advice for individual student groups.

We plan to:

- Appoint a part-time Student Secretary to manage central student functions such as *Nucleus* and National Conference.
- Expand the regional student staff until we have seven part-time staffworkers (to include London (2), Scotland, and East England).
- Make more use of students to pilot specific projects in the fellowship (following the example of the website and pastoral care scheme).
- Look at the possibility of student scholarships and intercalated years in collaboration with part-time Bible College training.
- Increase international distribution of *Nucleus* and other CMF literature.
- Promote more international links through ICMDA and joint ventures with sister bodies abroad and with IFES-linked bodies.

- Strengthen regional support and provide more support to medical school secretaries.
- Increase student involvement at all levels in CM.
- Integrate the student and junior doctors' ministries.

## Literature

Christian Literature is vital for fostering maturity and discipleship but good Christian medical literature is absent in much of the world. CMF already has one of the largest archives of Christian medical literature - at a time when needs are growing, the world is increasingly speaking English and the internet is making the world a global village. As a fellowship of Christian doctors we need to take the lead in producing high quality Christian literature on medical issues to equip Christian doctors and medical students worldwide. Literature extends our influence far beyond our conferences and meetings into schools, universities and hospitals. This is a huge opportunity.

We already publish:

- *Triple Helix* for doctors (circulation 7,000 quarterly in 20 countries).
- *Nucleus* for students (circulation 4,000 quarterly in 40 countries).
- *CMF News* for doctors and students (6,000 quarterly).
- *CMF Files* on medical ethics for schools (7,000 quarterly now in 2,000 UK schools).
- An internet website: over 800 articles online; 400,000 visitors thus far (also on CD-ROM).
- A wide range of booklets and books on Christian medical issues.
- Conference tapes.

We plan to:

- Publish new books on Healing, Psychiatry and the Role of the Christian Doctor.
- Produce and distribute Russian and Spanish versions of *Matters of Life and Death*.
- Completely revise the CD-ROM in Spring 2002.
- Substantially upgrade our website.
- Translate our best articles into other European languages (especially Russian).
- Expand and update our tapes library with talks available on CD-ROM.
- Expand our schools' ministry by targeting A level ethics curricula.
- Make more gifts of our publications to sister movements in developing countries.
- Appoint, in time, a publications secretary.

## Mission

Medical Mission is crossing new boundaries in reaching more countries, through a greater variety of routes than at any time in human history.

As one of the largest and oldest members of ICMDA, CMF has a large and hugely privileged membership (in terms of high quality medical training, literature and material resources).

From those to whom much has been given much will be expected and this leaves us with an awesome responsibility towards those with health needs worldwide and to Christian doctors in less privileged countries.

We have a twin role here of mobilising and resourcing UK and Irish Christian doctors to serve the poor in developing countries (incl CIS and Eastern Europe) and of helping to develop and support sister organisations throughout the world.

We already:

- Support a part-time overseas support secretary and PA.
- Provide correspondence (incl email) and newsletter support for 200 missionary members.
- Regularly mail journals like *Tropical Doctor*, *Medicine* and *Surgery* to missionary doctors.
- Represent CMF on the ICMDA executive (see p5) both for graduates and students.
- Run an annual two week residential refresher course for missionary doctors and nurses in partnership.
- Host meetings for Global Connections and Voluntary Agencies, and Medical Advisers.
- Prepare students for electives with three electives days, literature and advice.
- Network regularly with other Christian organisations involved in healthcare mission.
- Sponsor overseas students to our conferences here and through ICMDA (200 in the last 10 years).
- Send six summer evangelistic teams abroad each year (through regional partnerships).

We plan to:

- Encourage and facilitate more CMF members travelling abroad short and long term.
- Encourage more regional adoption and support of ICMDA-linked bodies abroad.
- Seek to discover more of what CMF members are already involved in abroad in order that we might better support them and encourage similar initiatives elsewhere.
- Develop a mentor scheme for Christian doctors planning to serve abroad.
- Provide more advocacy for CMF members serving abroad and refugee doctors here.
- Co-ordinate specific funding for projects that spring out of the above (eg recent book gift to India).
- In time make the Overseas Support Secretary post full-time.