



FAITH : MEDICINE : LIFE

Deeper

ER

Student Trainee

volunteer



# Intercalating **for a year?**

# Thinking through **options** & opportunities as a **student?**

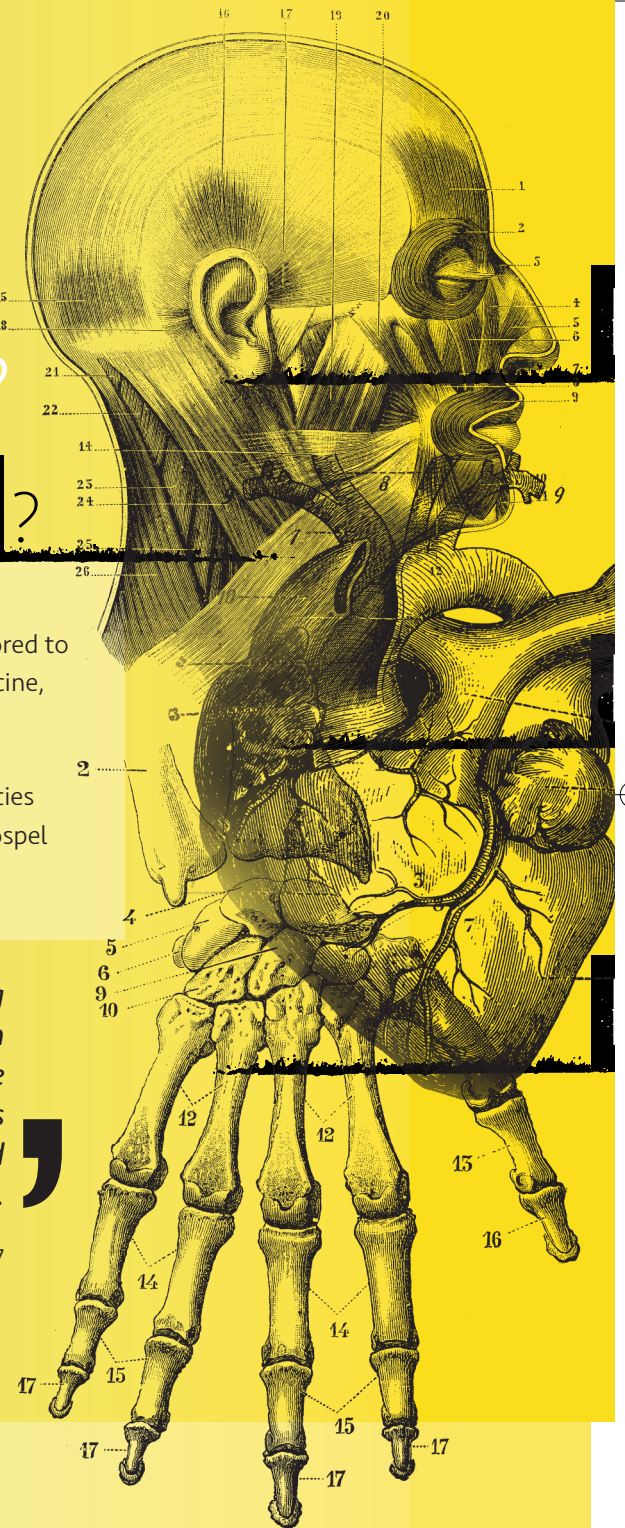
## Why not go **DeepER?**

The CMF **Deep:ER Student** programme gives you the opportunity to combine your faith and medicine, tailored to you. Join us to develop roots for a life of faith in medicine, being equipped to lead and disciple others.

At CMF we have a wealth of resources and opportunities to help you grow in your faith and to partner in the gospel whilst still a student.

*DeepER was the highlight of my intercalating year. I have grown in confidence and can honestly say I have received so much more than what I have given. Overall Deep:ER has helped me begin to integrate my faith and medicine – I truly recommend it.*

Joanna, Deep:ER Student Trainee, 2017



# HEAD

Attend conferences, read widely, grasp apologetic and ethical issues; the knowledge you gain in this year will be invaluable as you combine medicine and faith. Preparing for working at home or overseas, you will have your mind informed and stretched.

# HEART

Develop a godly character with disciplines that will stay with you in a pressurised medical career. Meet with your mentor, prioritise prayer – grow your relationship with Jesus.

# HANDS

Try new things, develop your gifts and serve others. Lead Bible studies, deliver talks, go on a summer mission team and write. This year is about serving, growing and having the joy of seeing others grow as God works through you.

## Training

The Deep:ER Student programme has two key components:

- **Work on a specific project:** attached to a department eg developing podcasts, short term mission work, advocacy, events
- **CMF training programme:** core and optional modules including how to lead Bible studies, give talks and write.

## Time commitments

- One year – half a day to one day a week.
- Be based where you are.

In partnership with







## Other opportunities

If this programme isn't right for you, check out our other volunteer roles:

### Deep **ER** Impact Volunteer

For those looking to volunteer in the holidays or other short period, performing a specific task

### Deep **ER** Trainee

For F3 year or other year-out opportunities, giving a minimum of two days a week for a year.

Find out more

Christian Medical Fellowship  
6 Marshalsea Road,  
London SE1 1HL

☎ 020 7234 9669  
✉ [volunteer@cmf.org.uk](mailto:volunteer@cmf.org.uk)  
f [facebook.com/ukcmf](https://www.facebook.com/ukcmf)  
t @UK\_CMF

Registered charity no. 1131658

[cmf.org.uk/volunteer/deeper](http://cmf.org.uk/volunteer/deeper)

