



FAITH : MEDICINE : LIFE

# Deeper

# ER

Trainee

volunteer



# Planning an F3 year?

Thinking through **options**  
& considering **a year out?**

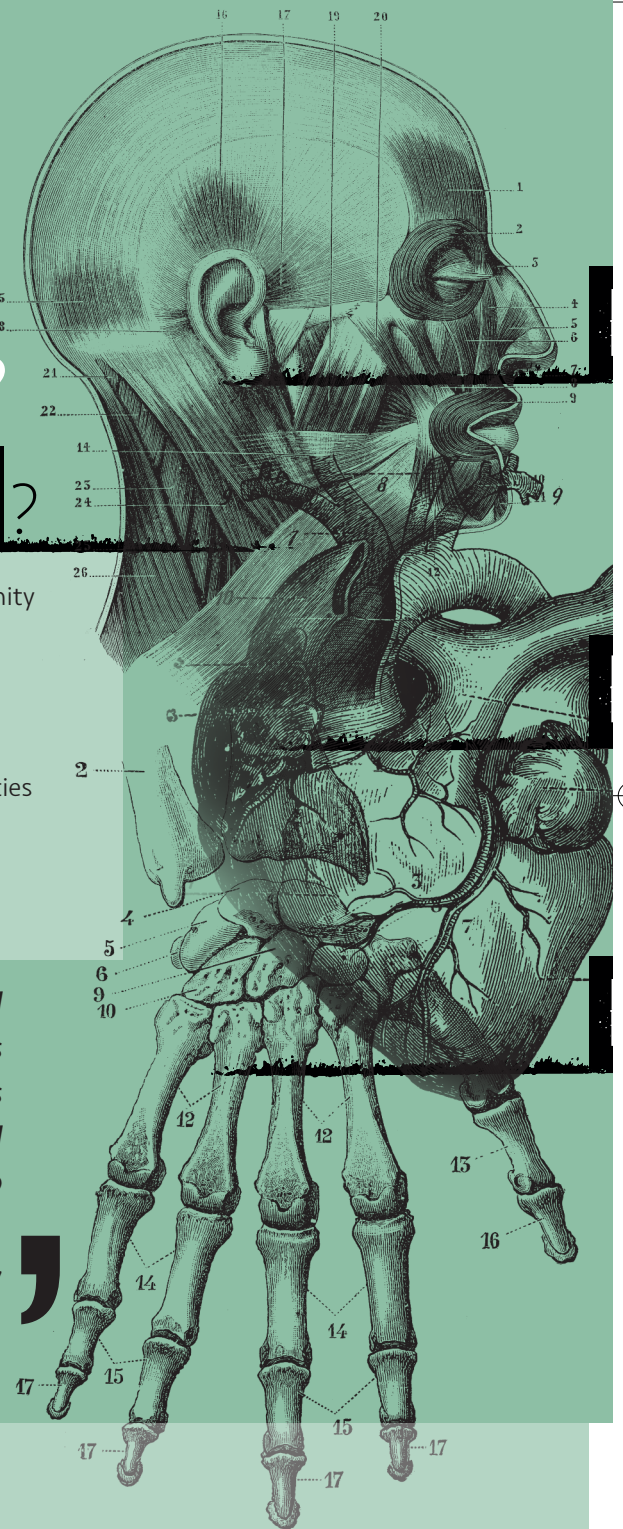
Why not go **Deep:ER?**

The CMF **Deep:ER** programme gives you the opportunity to combine your faith and medicine, tailored to you. Join us to develop roots for a life of faith in medicine, being equipped to lead and disciple others.

At CMF we have a wealth of resources and opportunities to help you grow in your faith and to partner in the gospel: discipling student leaders, writing, speaking, growing as a leader and more.

*The year was amazing. The teaching and training was always useful and it was good to be challenged into giving talks and writing articles. I now feel more equipped to link medicine with my faith and to help others to do the same.*

Sarah, Deep:ER Trainee, 2017





# HEAD

Attend conferences, read widely, grasp apologetic and ethical issues; the knowledge you gain in this year will be invaluable as you combine medicine and faith. Preparing for working at home or overseas, you will have your mind informed and stretched.

# HEART

Develop a godly character with disciplines that will stay with you in a pressurised medical career. Meet with your mentor, prioritise prayer – grow your relationship with Jesus.

# HANDS

Try new things, develop your gifts and serve others. Lead Bible studies, deliver talks, go on a summer mission team and write. This year is about serving, growing and having the joy of seeing others grow as God works through you.

## Training

The Deep:ER programme has three key components:

- **CMF training programme:** core and optional modules including how to lead Bible studies, give talks and write articles
- **Work on a specific project** attached to a department eg short-term mission work, advocacy, events
- **External training (optional):** we have joined up with external institutions\* to offer theological/mission training one day a week alongside your time with CMF. This might involve doing short modules or longer modules over 1–2 years. If you choose not to pursue external opportunities you would undertake further training within CMF

\*other modules can be considered

## Time commitments

- One year – Minimum 2 days a week (with 3 days locum/other work).
- Be based where you are.

## What does it cost?

You will need to raise your ministry costs. This is a terrific opportunity to grow, live by faith, develop lifelong prayer partnerships and use money wisely. You commit to raising £2,000 which will cover up to £500 for training with an external provider, relevant conference fees, travel expenses and CMF's costs. We will support you in partnering with churches and individuals, developing a team of people to support you in prayer and in some cases financially for the year.

In partnership with



## Other opportunities

If this programme isn't right for you, check out our other volunteer roles:

### Deep **ER** Impact Volunteer

For those looking to volunteer in the holidays or other short period, performing a specific task.

### Deep **ER** Student Trainee

For intercalating students who can give approximately one day a week for a year.

Find out more

Christian Medical Fellowship  
6 Marshalsea Road,  
London SE1 1HL

☎ 020 7234 9669  
✉ [volunteer@cmf.org.uk](mailto:volunteer@cmf.org.uk)  
f [facebook.com/ukcmf](https://www.facebook.com/ukcmf)  
t @UK\_CMF

Registered charity no. 1131658

[cmf.org.uk/volunteer/deeper](http://cmf.org.uk/volunteer/deeper)

